

DocLimit 1.0

What is DocLimit?

What is DocLimit? DocLimit is a utility that limits the number of “recent” document files that appear on your Windows 95 Start menu. See Figure 1, below. Without a utility such as DocLimit, the recent documents list will continue to grow as you launch files. Without DocLimit, your only option is to remove all documents when the list becomes too large.

DocLimit allows you to specify exactly how many documents remain on the documents list. You can even have DocLimit keep the list empty if you so desire. DocLimit resides on the Windows 95 system notification area or “tray.” See Figure 2, below.

See Also:

[Using DocLimit](#)

Figure 1

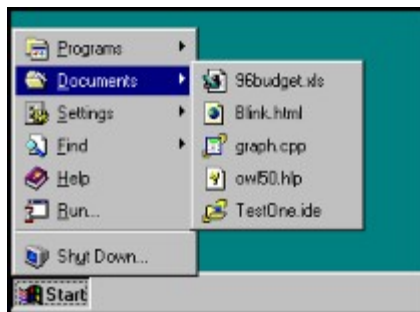
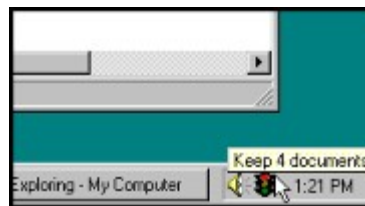


Figure 2



DocLimit 1.0

Installing DocLimit

1. Create a new folder called DocLimit.
2. Copy all DocLimit files to the new DocLimit folder.
3. Create a shortcut to the file DOCLIMIT.EXE.
4. Place the shortcut in: 'C:\WINDOWS\StartMenu\Programs\StartUp'

NOTE: See your Windows 95 documentation for information on how to create shortcuts.

DocLimit 1.0

Using DocLimit

To change DocLimit's settings just double click the DocLimit icon located on the system tray. Within the configuration dialog (see Figure 1) you can adjust how many documents are retained.

Also, DocLimit functions may be accessed by right-clicking on the DocLimit icon. Right-clicking the DocLimit icon will cause a pop-up menu to appear. See Figure 2.

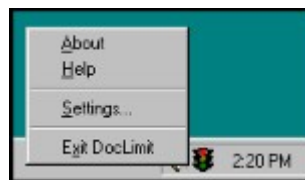
See Also:

[Shutting Down DocLimit](#)

Figure 1



Figure 2



DocLimit 1.0

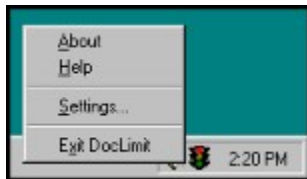
Shutting Down DocLimit

Normally you would leave DocLimit running all the time. However, if you wish to shut down DocLimit, right-click the DocLimit icon on the system tray (see Figure 1) and choose “Exit DocLimit.”

See Also:

[Using DocLimit](#)

Figure 1



DocLimit 1.0

Why is 15 the maximum number of documents?

This is because Windows 95 only shows a maximum of 15 documents on the recent documents list. It would be silly for DocLimit to allow more documents than Windows 95 itself allows.

DocLimit 1.0

Shareware Registration

See Also:

[DocLimit License Agreement](#)

DocLimit is shareware. Feel free to distribute DocLimit to anyone you like. If you use DocLimit beyond the 30 day evaluation period you are required to register for \$8.00 US.

Please send your check or money order for \$8.00 US to:

Shawn Emry Riggins
175 Berry Creek Dr.
Folsom CA, 95630

Please make all checks or money orders payable to Shawn Emry Riggins.

DocLimit 1.0

License Agreement

See Also:

[Registering DocLimit](#)

DocLimit 1.0

Copyright/License/Warranty

DocLimit Copyright © 1996-1997 by Shawn Emry Riggins

All rights reserved.

DocLimit is written and owned by Shawn Emry Riggins. DocLimit is a trademark of Shawn Emry Riggins.

The use of DocLimit beyond a 30 day evaluation period requires payment of \$8.00 US to Shawn Emry Riggins. See REGISTER.TXT for registration information.

THIS SOFTWARE AND THE ACCOMPANYING FILES ARE PROVIDED "AS IS" AND WITHOUT WARRANTIES AS TO PERFORMANCE OF MERCHANTABILITY OR ANY OTHER WARRANTIES WHETHER EXPRESSED OR IMPLIED. Because of the various hardware and software environments into which DocLimit may be put, NO WARRANTY OF FITNESS FOR A PARTICULAR PURPOSE IS OFFERED.

Under no circumstances will Shawn Emry Riggins be liable for any damages or losses arising from the use or misuse of the DocLimit software. Because of the various hardware and software environments into which DocLimit may be put, NO WARRANTY OF FITNESS FOR A PARTICULAR PURPOSE IS OFFERED. If you use DocLimit you agree to these terms.

DocLimit 1.0

Contacting the Author

You may contact Shawn Riggins via US mail or electronically. See the WWW page for current e-mail address information.

Shawn Riggins
175 Berry Creek Dr.
Folsom, CA 95630

World Wide Web: <http://www.geocities.com/SiliconValley/Pines/5427/index.html>

